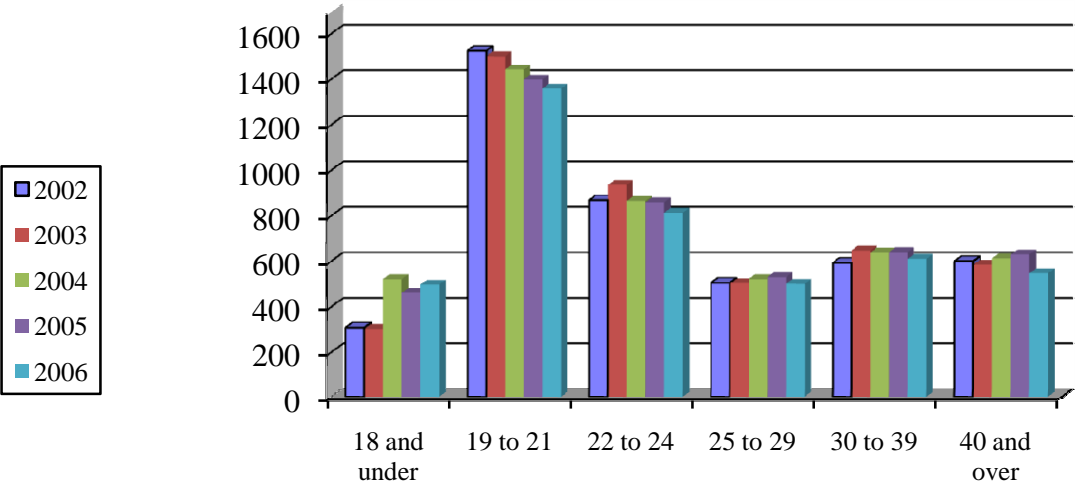


Total Fall Enrollment by Age



13

	2002	2003	2004	2005	2006	Average	Total
18 and under	307	301	520	460	496	417	9.4%
19 to 21	1,523	1,499	1,441	1,397	1,357	1,443	32.4%
22 to 24	867	934	864	858	812	867	19.5%
25 to 29	504	502	520	528	499	511	11.5%
30 to 39	591	646	637	639	609	624	14.0%
40 and over	599	583	611	628	546	593	13.3%
TOTAL	4,391	4,465	4,593	4,510	4,319	4,456	100.00%

Data Source: ECU Jenzabar Files