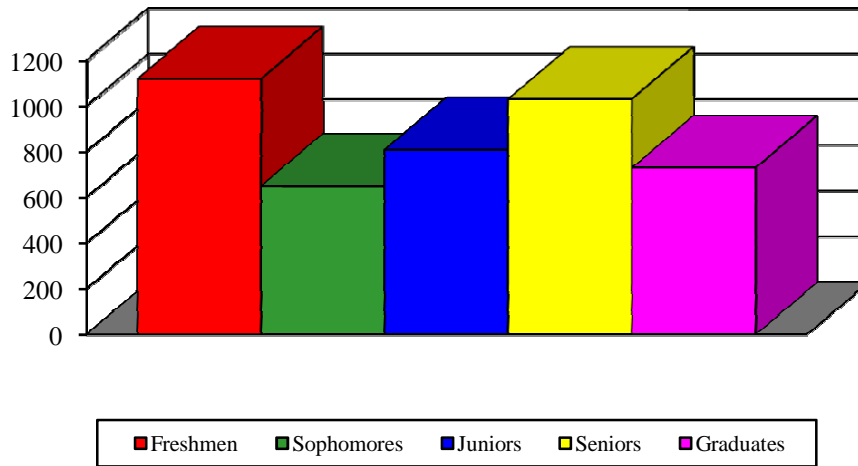


2006 Fall Enrollment



Fall 2006	Resident	% Resident	Non-Resident	% Non-Resident	Total
Freshmen	1057	93.5%	73	6.5%	1130
Sophomores	588	91.6%	54	8.4%	642
Juniors	669	90.8%	68	9.2%	737
Seniors	984	96.1%	40	3.9%	1024
Unclassified Ugs	3	0.0%	0	0.0%	3
Post Baccalaureate*	74	93.7%	5	6.3%	79
Subtotal	3375	93.4%	240	6.6%	3615
Graduates	692	98.3%	12	1.7%	704
Special Graduates	0	--	0	--	0
GRAND TOTAL	4067	94.2%	252	5.8%	4319

*Students pursuing another baccalaureate degree.

Data Source: ECU Jenzabar Files