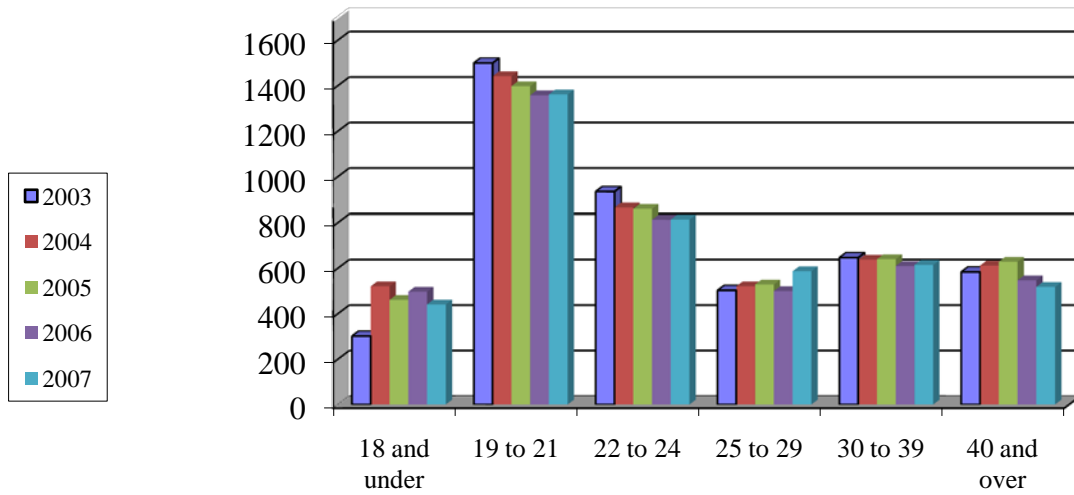


## Total Fall Enrollment by Age



	<b>2003</b>	<b>2004</b>	<b>2005</b>	<b>2006</b>	<b>2007</b>	<b>Average</b>	<b>Total</b>
<b>18 and under</b>	301	520	460	496	440	<b>443</b>	<b>10.0%</b>
<b>19 to 21</b>	1,499	1,441	1,397	1,357	1,361	<b>1,411</b>	<b>31.8%</b>
<b>22 to 24</b>	934	864	858	812	813	<b>856</b>	<b>19.3%</b>
<b>25 to 29</b>	502	520	528	499	586	<b>527</b>	<b>11.9%</b>
<b>30 to 39</b>	646	637	639	609	614	<b>629</b>	<b>14.2%</b>
<b>40 and over</b>	583	611	628	546	517	<b>577</b>	<b>13.0%</b>
<b>TOTAL</b>	<b>4,465</b>	<b>4,593</b>	<b>4,510</b>	<b>4,319</b>	<b>4,348</b>	<b>4,444</b>	<b>100.00%</b>

Note: Due to missing age information for 2007, 17 students were added to the total to reconcile earlier totals

Data Source: ECU Jenzabar Files