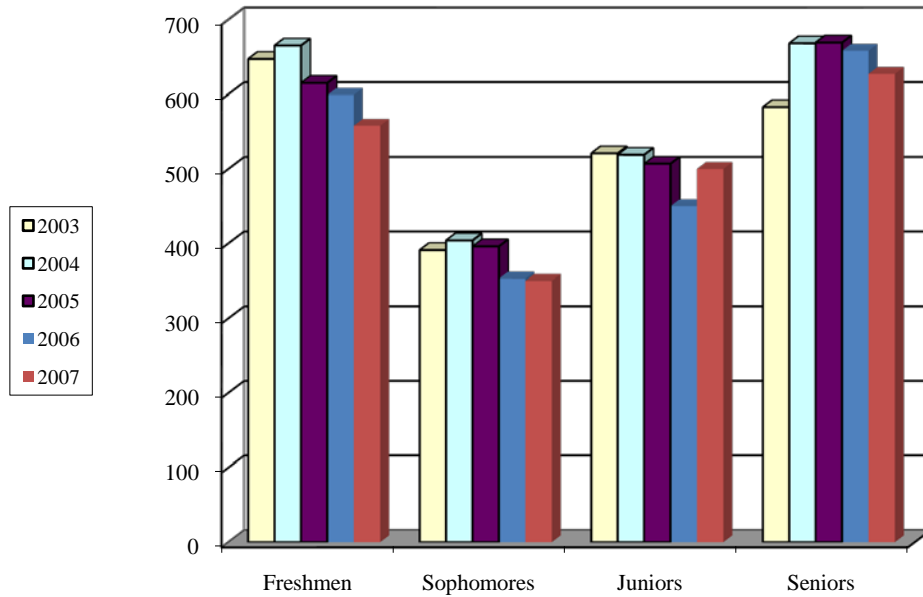


## Fall Undergraduate Female Enrollment



<b>Classification</b>	<b>2003</b>	<b>2004</b>	<b>2005</b>	<b>2006</b>	<b>2007</b>	<b>Average</b>
<b>Freshmen</b>	647	665	615	599	558	609
<b>Sophomores</b>	391	404	396	353	350	376
<b>Juniors</b>	521	519	507	450	500	494
<b>Seniors</b>	583	668	669	658	627	656
<b>Post Baccalaureate*</b>	53	64	58	59	67	62
<b>Unclassified Undergraduates</b>	13	25	22	2	2	13
<b>TOTAL</b>	<b>2208</b>	<b>2345</b>	<b>2267</b>	<b>2121</b>	<b>2104</b>	<b>2209</b>

\*Students working on a second baccalaureate degree.

Source: EDU UDS Report File, UDS0203.XLS