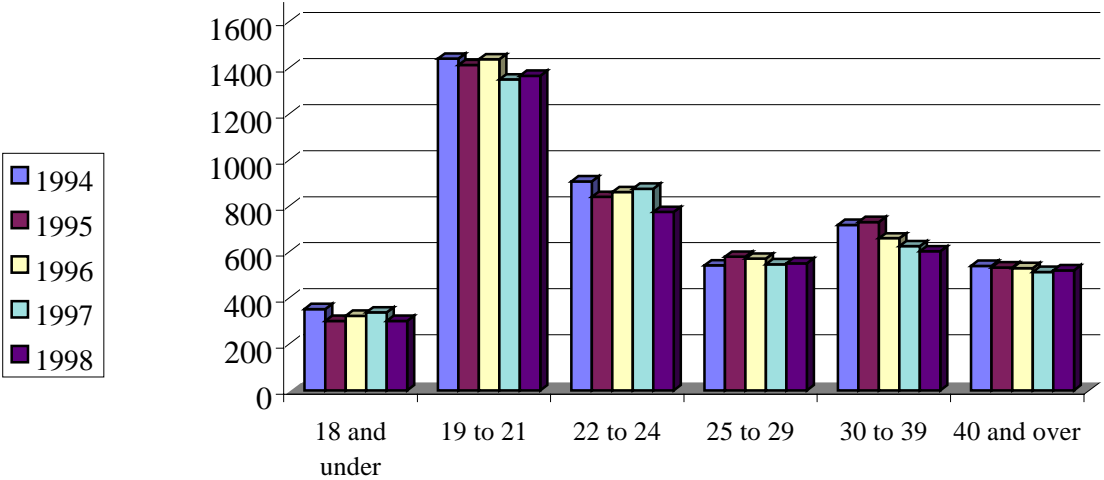


Total Fall Enrollment by Age



	1994	1995	1996	1997	1998	Average	Total
18 and under	352	301	323	338	301	323	7.46%
19 to 21	1440	1412	1437	1350	1366	1401	32.36%
22 to 24	908	840	861	876	775	852	19.68%
25 to 29	542	579	571	547	551	558	12.89%
30 to 39	719	731	660	625	603	668	15.42%
40 and over	540	533	530	513	520	527	12.18%
TOTAL	4501	4396	4382	4249	4116	4329	100.00%

Source: UDS Report Files