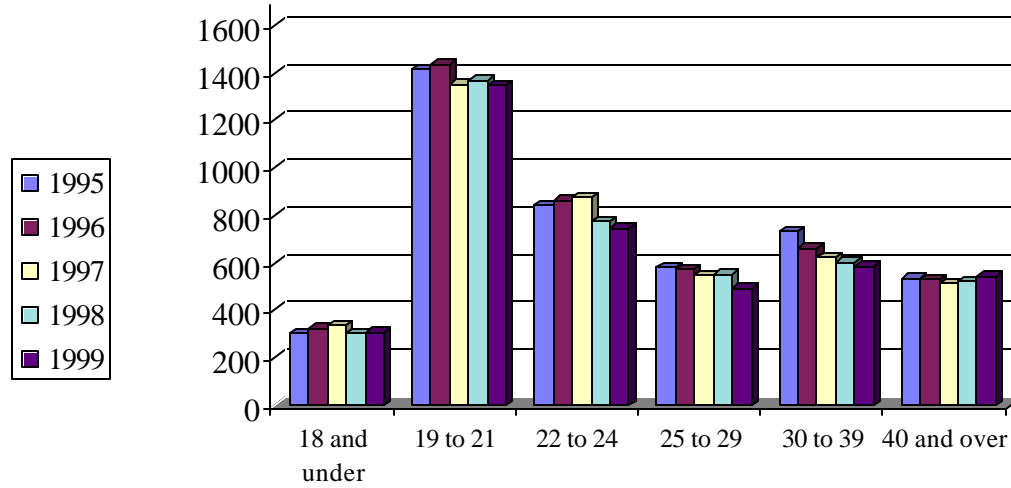


Total Fall Enrollment by Age



	1995	1996	1997	1998	1999	Average	Total
18 and under	301	323	338	301	308	314	7.42%
19 to 21	1412	1437	1350	1366	1345	1382	32.65%
22 to 24	840	861	876	775	744	819	19.36%
25 to 29	579	571	547	551	493	548	12.95%
30 to 39	731	660	625	603	586	641	15.15%
40 and over	533	530	513	520	542	528	12.47%
TOTAL	4396	4382	4249	4116	4018	4232	100.00%