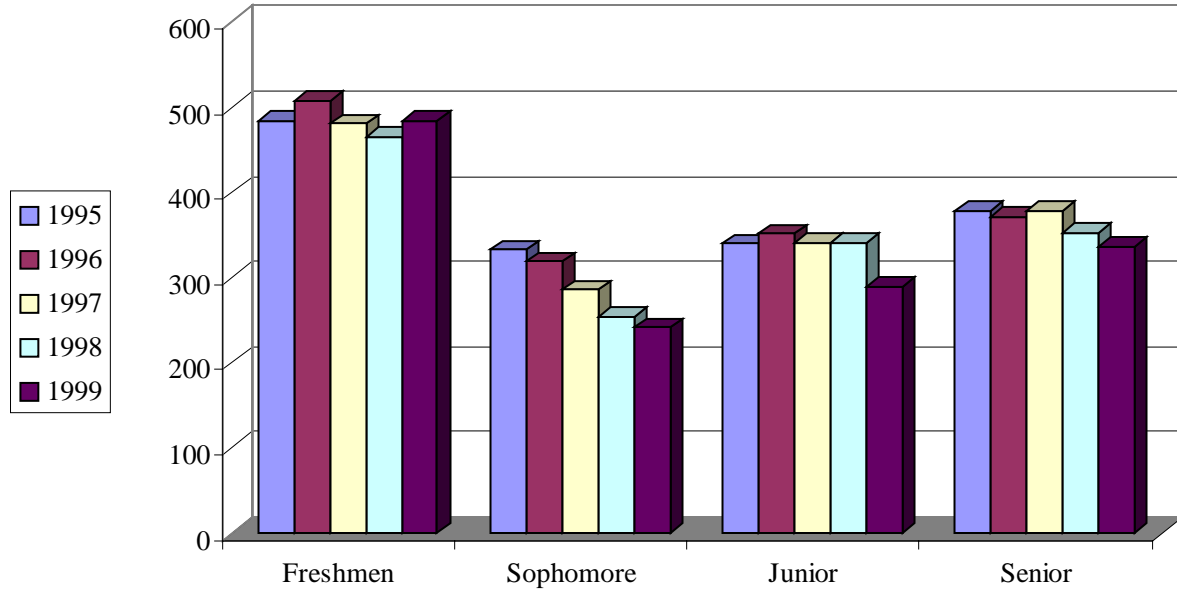


# Undergraduate Male Enrollment



<b>Classification</b>	<b>1995</b>	<b>1996</b>	<b>1997</b>	<b>1998</b>	<b>1999</b>	<b>Average</b>
<b>Freshmen</b>	484	508	481	466	484	485
<b>Sophomore</b>	333	319	286	254	241	287
<b>Junior</b>	340	352	341	341	290	333
<b>Senior</b>	378	372	379	353	336	364
<b>Unclassified Undergraduate</b>	2	2	0	1	0	1
<b>TOTAL</b>	<b>1537</b>	<b>1553</b>	<b>1487</b>	<b>1415</b>	<b>1351</b>	<b>1469</b>

Source: ECU UDS Report Files