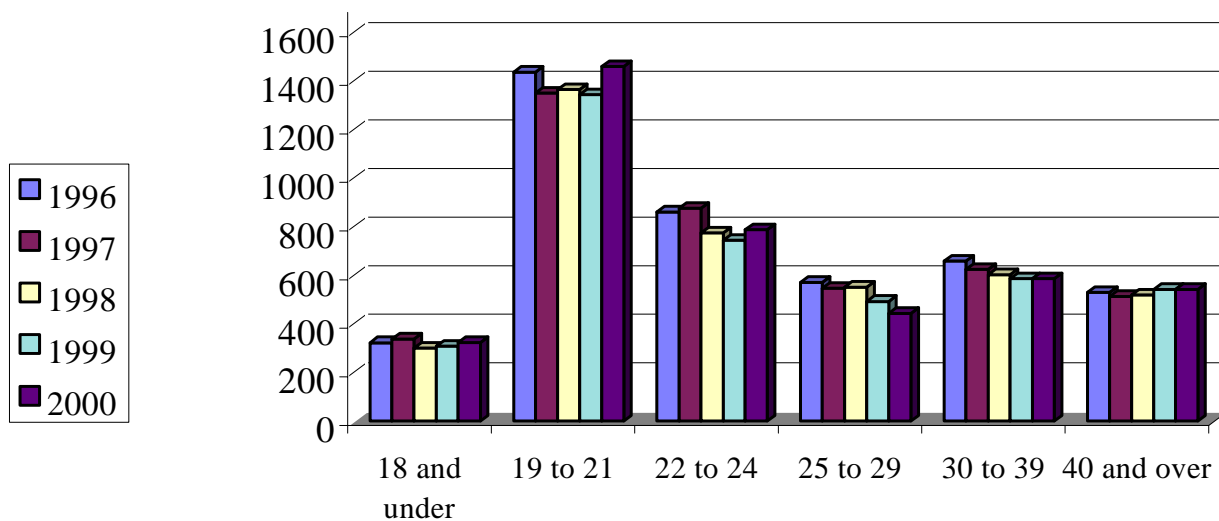


Total Fall Enrollment by Age



	1996	1997	1998	1999	2000	Average	Total
18 and under	323	338	301	308	324	319	7.62%
19 to 21	1437	1350	1366	1345	1460	1392	33.27%
22 to 24	861	876	775	744	789	809	19.34%
25 to 29	571	547	551	493	444	521	12.46%
30 to 39	660	625	603	586	587	612	14.64%
40 and over	530	513	520	542	543	530	12.66%
TOTAL	4382	4249	4116	4018	4147	4182	100.00%