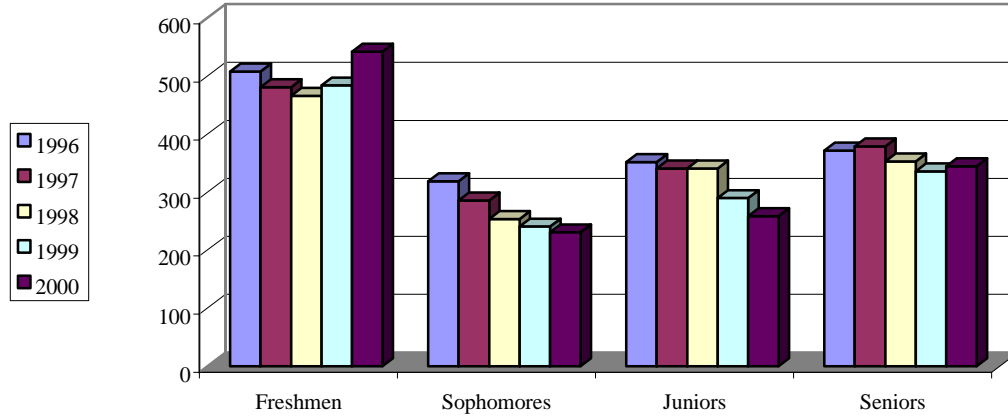


Undergraduate Male Enrollment



Classification	1996	1997	1998	1999	2000	Average
Freshmen	508	481	466	484	542	496
Sophomores	319	286	254	241	231	266
Juniors	352	341	341	290	259	317
Seniors	372	379	353	336	345	357
Unclassified Undergraduates	2	0	1	0	0	1
TOTAL	1553	1487	1415	1351	1377	1437

Source: ECU UDS Report Files