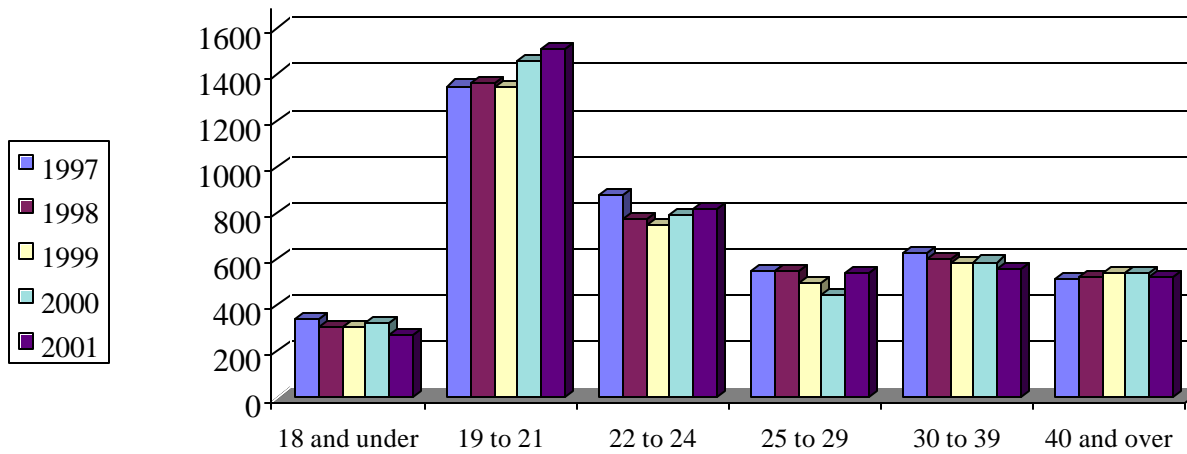


Total Fall Enrollment by Age



	1997	1998	1999	2000	2001	Average	Total
18 and under	338	301	308	324	269	308	7.42%
19 to 21	1350	1366	1345	1460	1508	1406	33.89%
22 to 24	876	775	744	789	817	800	19.29%
25 to 29	547	551	493	444	537	514	12.40%
30 to 39	625	603	586	587	557	592	14.26%
40 and over	513	520	542	543	524	528	12.74%
TOTAL	4249	4116	4018	4147	4212	4148	100.00%

Source: ECU UDS Report