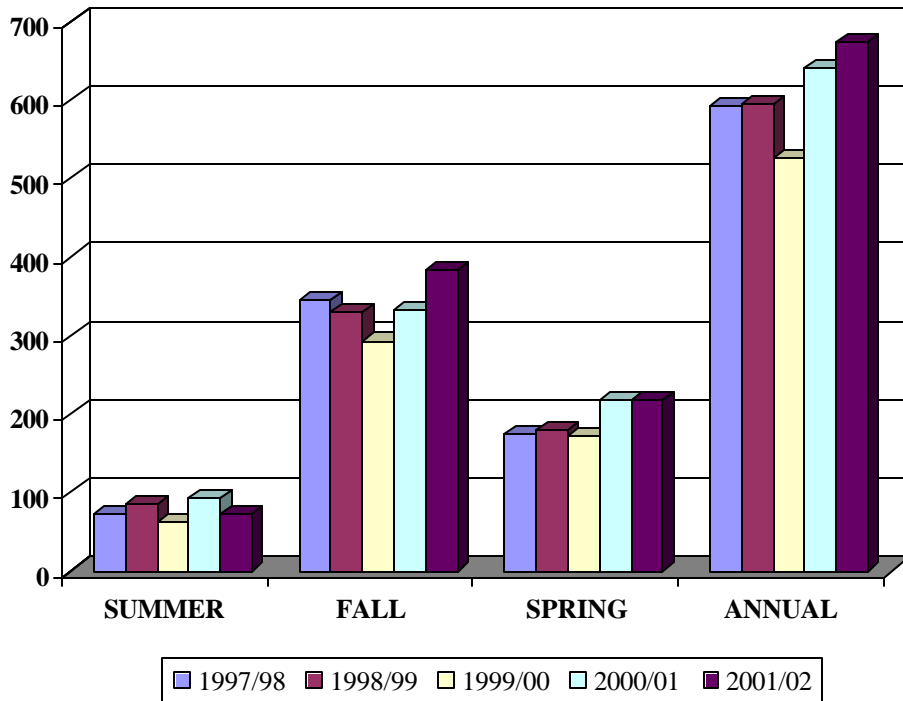


UNDERGRADUATE TRANSFER STUDENTS



| YEAR | SUMMER | FALL | SPRING | ANNUAL |
|----------------|---------------|-------------|---------------|---------------|
| 1997/98 | 72 | 345 | 175 | 592 |
| 1998/99 | 86 | 330 | 180 | 596 |
| 1999/00 | 62 | 293 | 172 | 527 |
| 2000/01 | 92 | 333 | 217 | 642 |
| 2001/02 | 73 | 384 | 217 | 674 |

Source: Office of Academic Affairs