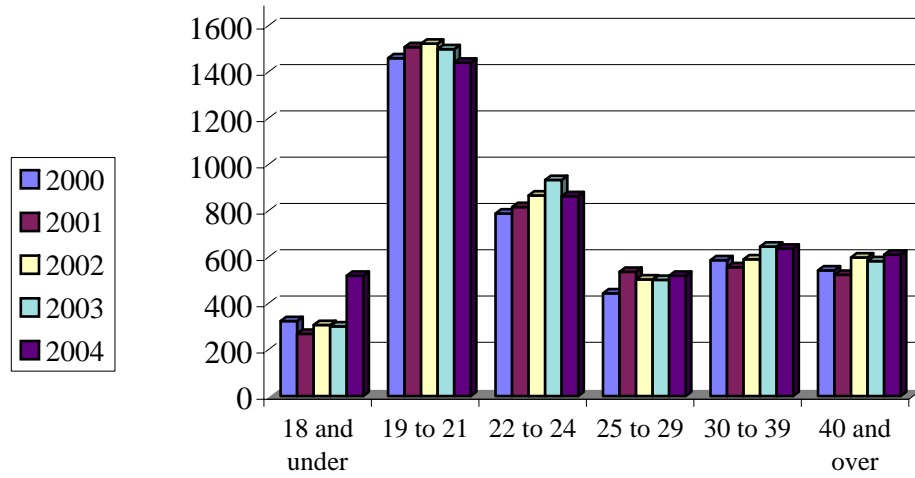


Total Fall Enrollment by Age



	2000	2001	2002	2003	2004	Average	Total
18 and under	324	269	307	301	520	344	7.89%
19 to 21	1460	1508	1523	1499	1441	1486	34.07%
22 to 24	789	817	867	934	864	854	19.58%
25 to 29	444	537	504	502	520	501	11.50%
30 to 39	587	557	591	646	637	604	13.84%
40 and over	543	524	599	583	611	572	13.11%
TOTAL	4147	4212	4391	4465	4593	4362	100.00%

Data Source: ECU Jenzabar Files