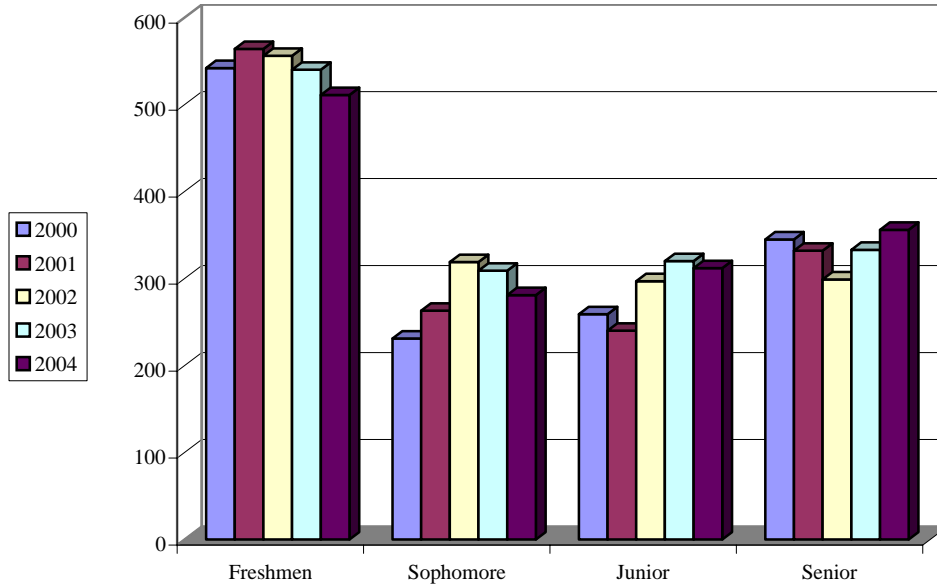


Fall Undergraduate Male Enrollment



Classification	2000	2001	2002	2003	2004	Average
Freshmen	542	564	556	540	511	543
Sophomore	231	263	319	309	281	281
Junior	259	240	297	320	312	286
Senior	345	332	299	333	356	333
Unclassified Undergraduate	0	1	1	40	21	13
Post Baccalaureate*	22	38	32	38	25	31
TOTAL	1399	1438	1504	1580	1506	1485

*Students working on a second baccalaureate degree.

Data Source: ECU Jenzabar Files