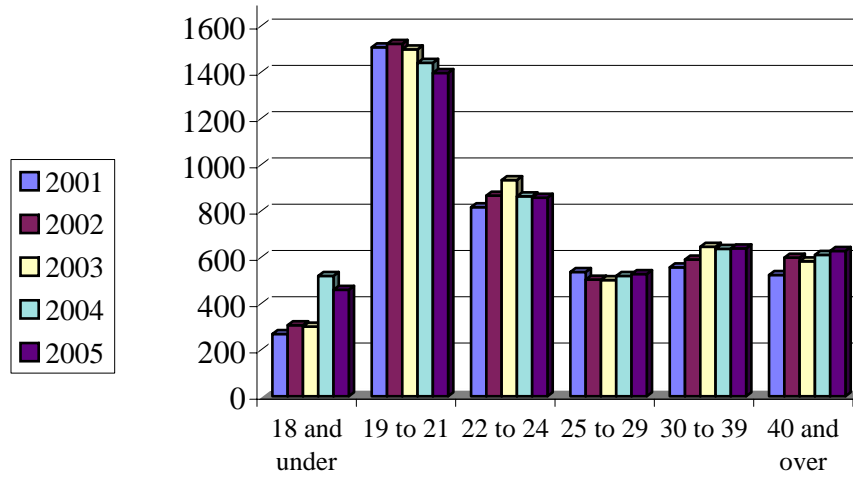


Total Fall Enrollment by Age



13

	2001	2002	2003	2004	2005	Average	Total
18 and under	269	307	301	520	460	371	8.4%
19 to 21	1,508	1,523	1,499	1,441	1,397	1,474	33.2%
22 to 24	817	867	934	864	858	868	19.6%
25 to 29	537	504	502	520	528	518	11.7%
30 to 39	557	591	646	637	639	614	13.8%
40 and over	524	599	583	611	628	589	13.3%
TOTAL	4,212	4,391	4,465	4,593	4,510	4,434	100.00%

Data Source: ECU Jenzabar Files