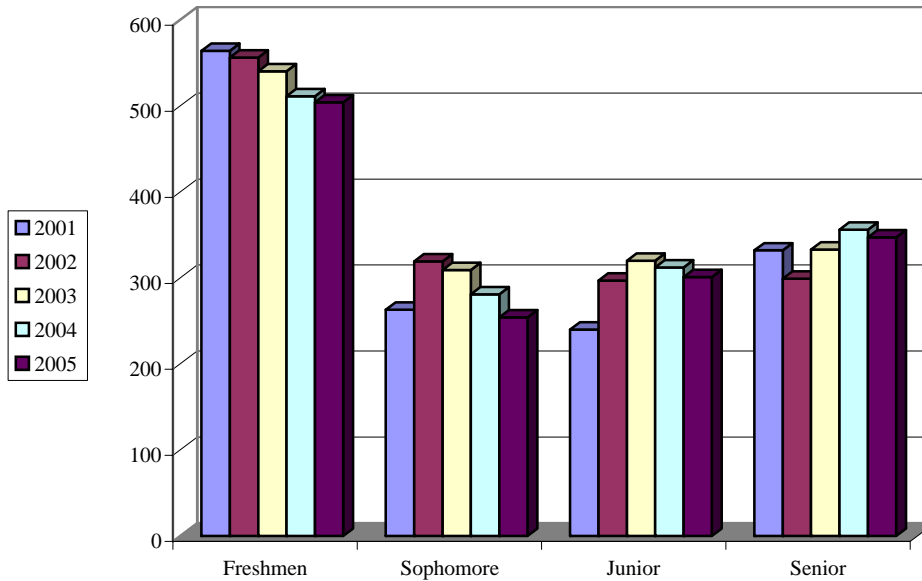


Fall Undergraduate Male Enrollment



| Classification | 2001 | 2002 | 2003 | 2004 | 2005 | Average |
|-----------------------------------|-------------|-------------|-------------|-------------|-------------|----------------|
| Freshmen | 564 | 556 | 540 | 511 | 504 | 535 |
| Sophomore | 263 | 319 | 309 | 281 | 254 | 285 |
| Junior | 240 | 297 | 320 | 312 | 301 | 294 |
| Senior | 332 | 299 | 333 | 356 | 347 | 333 |
| Unclassified Undergraduate | 1 | 1 | 40 | 21 | 19 | 16 |
| Post Baccalaureate* | 38 | 32 | 38 | 25 | 33 | 33 |
| TOTAL | 1438 | 1504 | 1580 | 1506 | 1458 | 1497 |

*Students working on a second baccalaureate degree.

Data Source: ECU Jenzabar Files