



SPRING 2026

SC CCRR QUARTERLY NEWSLETTER

Spring is a time for growth and new beginnings, and the South Central CCRR team is excited for all that this season brings. We continue working hard to expand our trainings and resources so we can better support our amazing SC providers. Whether you need help with classroom setup, room arrangement, developmental concerns, or overall program support, our team is here to help your program grow and thrive. As the season changes, we are especially grateful for the strong partnerships we share across our region. Thank you for the important work you do each day for children and families.

We look forward to a season filled with learning, growth, and meaningful connections. Wishing you a wonderful spring!



SC CCRR STAFF:

LEAH LYON
EXECUTIVE DIRECTOR

ANGEL PATTERSON
REGIONAL DIRECTOR
apatterson@ecok.edu
580-559-5629

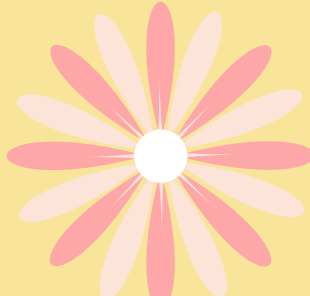
MCKENNA MORGENTHALER
CHILD CARE CONSULTANT
mckemore@ecok.edu
580-559-5303

JESSICA COLUNGO
BUSINESS CONSULTANT
jcolungo@ecok.edu
580-559-5327

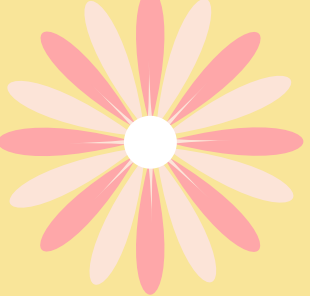
STORMI MCCRATE
INFANT/TODDLER CONSULTANT
smccrate@ecok.edu
580-559-5304

BETHANY WALLING
ADMINISTRATIVE SUPPORT
betjbes@ecok.edu

SC CCRR is located on the campus of
East Central University
1100 E. 14th St. Ada, OK 74820



TRAININGS



Record Keeping
April 11th
9:00 am-12 pm
ECU CCRR Office
Ada, OK



Safe Sleep

Presented by:
Stormi
McCrata

When: Tuesday, April 7
Time: 5:30-7:30 pm
Where: ECU Child Care
Resource and Referral office
1100 E. 14th Street, PMB E-5
Ada, Ok. 74820
580-559-5304

ECU CCRR will now be offering monthly Safe Sleep Trainings!! Watch your email for more information!



RECONNECT²

MAY 30, 2026
9:00 AM-1:00 PM
ADA, OK



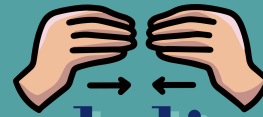
SC REGIONAL RECONNECT

Watch THEM SHINE



This year's Regional Reconnect focused on implementing sign language into the classroom. Attendees gained practical strategies, hands-on practice, and simple ways they could begin incorporating sign language into their daily routines which in turn will help support communication, reduce frustration, and strengthen relationships with the children in their care.

Such a FUN EVENT!!!



highlight



South Central Center of the Year-
CougCare- Shawnee, OK

hooray!



South Central Home Provider of the Year-
Amber Garcia- Sulphur, OK



SPRING Crafts

Click on the pictures for more ideas and instructions



Shared Services

Needing ideas for fun activities or lesson plans?
Shared Services has you covered!
 They have a variety of ideas for multiple curriculum areas including:

Outdoor Play Nutrition

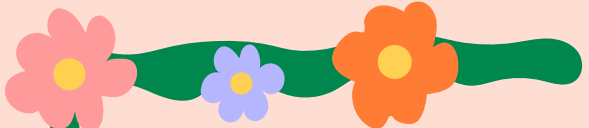
Theme-Based Lesson Plans

Emotional Regulation

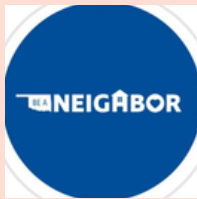
Anti-Bias Education

Nature-Based Learning

Click on the area you want to learn more about!



**Families
needing help?**



BULLETIN KITS



Only 20 bulletin board kits
AVAILABLE for this summer theme!
Reserve your kit TODAY!

SCAN THE
QR CODE
TO PLACE
YOUR ORDER



ECU SC-CCRR'S

MISSION:

to ensure all
oklahoma
families have
access to quality
child care through
community-based
resource and
referral services



**Don't forget to
follow us on
Facebook:
@ECUCCRR**



SURVIVING SPRING Allergies

Spring allergies are most commonly related to tree pollens:

- Birch
- Elm
- Maple
- White Ash
- Walnut

1 in 4 people suffer from allergies

Common Symptoms

- Runny nose
- Nasal congestion
- Coughing
- Sneezing
- Watery eyes
- Itchy nose and eyes
- Worsened asthma symptoms (for asthmatics)
- Decreased quality of sleep

Remedies

- Nasal saline rinses
- Nasal steroid sprays
- Antihistamines (oral or prescription nasal spray)
- Immunotherapy (allergy shots)

Prevention

- Overall avoidance
- Check pollen counts daily and stay inside on high pollen days
- HEPA filter air cleaners in your home
- Wash bedding and clothing often in hot water
- Shower and change clothes after you've been outside on high pollen day

Allergy Testing

Testing can be done with a skin test or a blood test.

MASSACHUSETTS EYE AND EAR

business corner

Marketing & Growth Tip for Owners:

Leverage word-of-mouth by encouraging parents to share experiences on social media. Create "buzzworthy moments" in your programming to make your center stand out.

[Click here for a free "What to Post on Social Media: A Guide for Child Care Providers" guide!](#)

Enter! to Win!

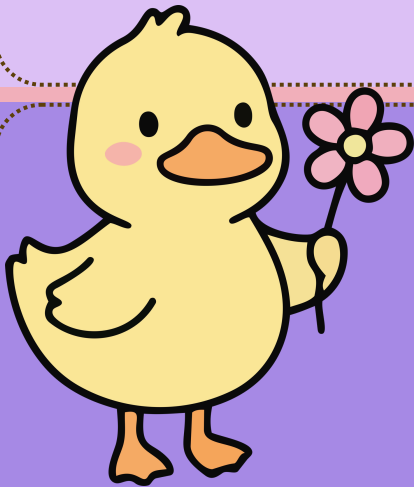
Provider Update Forms

Complete the update form
BY MARCH 30th
for a chance to win!!

CONSCIOUS DISCIPLINE

training and resources from an
endorsed facilitator for your program!

Scan to complete
Update Form
TODAY!



HELPFUL RESOURCES

Warmline:

okwarmline.org

CECPD:

cecpd.org/

DHS locator:

oklahoma.gov/okdhs/contact-us/dhsofficelocations.html

QRIS:

oklahoma.gov/okdhs/services/child-care-services/qris.html

Scholars:

okhighered.org/scholars/

ECU CCRR:

<https://www.ecok.edu/current-students/student-services/centers-programs/child-care-resource-and-referral-agency.php>

OSPR:

<https://www.okschoolreadiness.org/>

THE PYRAMID MODEL CONSORTIUM
Supporting Early Childhood PBIS

Home Programs Supporting the Pyramid Model Resources Practice Based Coaching Currently Implementing

CLICK HERE



Oklahoma - Pyramid Model
Consortium

Oklahoma
PYRAMID MODEL

Promoting Social Emotional Competence
in Oklahoma's Young Children

In Oklahoma, the promotion of young children's self-being and resilience is a critical focus, as these foundational skills play a pivotal role in their long-term success. The state supports the Pyramid Model framework as a proven approach to fostering emotional regulation and reducing challenging behaviors in early childhood settings. Partners from public and private sectors, including leaders committed to enhancing the emotional health and competencies of young children and their families, collaborate to advance the implementation of Pyramid Model principles and initiatives. Through these efforts, Oklahoma aims to strengthen emotional literacy and equip children, educators, and families with the tools needed to thrive in school and life.

The SLT has worked closely with the Pyramid Model Consortium to develop a comprehensive strategic plan for statewide implementation of the Pyramid Model and complete the exploration/planning stage for each of the Pyramid Model key structures (state leadership team or SLT, a master cadre of training and TA professionals; behavior specialists; implementation programs and communities; and data and evaluation systems).

VISION STATEMENT

All Oklahoma early childhood practitioners, in partnership with families, will have the knowledge, skills, disposition, and supports necessary to nurture infants and young children's social-emotional well-being within their family, culture, and community.

MISSION STATEMENT

The mission of the Oklahoma Pyramid Model State Leadership Team is to develop the state infrastructure so that all early care, health, and education providers implement the Pyramid Model of positive behavior interventions and support with fidelity.

PYRAMID MODEL IMPLEMENTATION

We still have a few spots open to become a Pyramid Model Implementation Site! If you'd like to learn more, reach out to McKenna Morgenthaler for more details.



Save the Date:

WIRED FOR PLAY: WHY PLAY MATTERS

Thrive Summit:
Wired for Play: Why Play Matters
May 1-2, 2026
Embassy Suites in Norman, OK



OKLAHOMA
PARTNERSHIP
FOR SCHOOL
READINESS

REGISTER HERE



Welcome



ECU CCRR is thrilled to send a BIG welcome to OPSR's new Executive Director, Dr. Grace Kelley!

Dr. Kelley is no stranger to this work—she has previously partnered with OPSR and OCCRA and was even part of the original taskforce that helped launch OPSR. Most recently, she has been working at the national level and presented at our latest Research Symposium.

We are in great hands with her deep knowledge of the early childhood field and her experience at both the state and national levels. We look forward to the leadership and vision she will bring to this role!



Register Here!



OKLAHOMA STRONG START

Helping Oklahoma's Child Care Workforce: Free Child Care for Child Care Professionals

The Oklahoma Strong Start Benefit Program provides free child care to eligible staff working in licensed child care facilities. The program helps address the state's child care workforce shortage by easing costs so providers can stay focused on the children they care for.

Who's Eligible?
To qualify, applicants must:
Work 20 hours per week (on average), either:
Directly with children (care, supervision, education)
In a supporting role at a licensed child care facility

Work in a facility that:
Is licensed under the Oklahoma Child Care Facilities Licensing Act
Participates in the DHS Child Care Subsidy Program

Meet income limits:
Two-parent household: ≤ \$120,000/year gross income,
Single-parent household: ≤ \$60,000/year gross income, or
Have children enrolled in a child care program that participates in the DHS Care Subsidy Program

Program Benefits

- FREE child care for eligible staff in licensed facilities
- No co-pays for qualifying families through DHS Child Care Subsidy
- Income-based support for single- and two-parent households

The three-year pilot is led by the Oklahoma Partnership for School Readiness and Oklahoma Human Services, with funding authorized by House Bill 2778 and provided through the federal Preschool Development Grant.

Learn more at okschoolreadiness.org/oklahoma-strong-start-program

Just one more CHAPTER



Reading aloud to children for just **five minutes** daily significantly boosts literacy, brain development, vocabulary, and emotional bonding!



Telehealth for Child Care Professionals

Getting to a doctor can be hard when your work day is dedicated to caring for children. Now, child care professionals, their employees, and their dependents can seek medical advice anytime, anywhere without a copay!

HOW IT WORKS

Talk directly with a physician or licensed mental health professional on your schedule, anytime, anywhere within minutes by phone, video, or mobile app - 24/7/365



TELEMEDICINE

24/7 access to a board-certified doctor for non-emergency care for your employees and their families anywhere, and anytime in order to get help with many common conditions, including: cold & flu, fever, rashes, asthma, allergies, sports injuries, sore throat, and more.

SERVICES OFFERED

- Unlimited use, no per-call fees or co-pays
- Services are completely confidential and available to employees and their dependents.
- Prescriptions called into your local pharmacy



TELETHERAPY AND MENTAL HEALTH

24/7 access to a experienced therapists, counselors, psychiatrists and behavioral health specialists to support many common issues, including: alcohol and substance use, stress, life changes, trauma, and more.



This publication was made possible by grant number 90TP094-01-00. Its contents are solely the responsibility of the authors and do not necessarily represent the official view of the United States Department of Health and Human Services, Administration for Children and Families.



Dolly Parton's Imagination Library sends children from birth to age five a free book every month, setting them up for success in school and life.

Dolly Parton's Imagination Library is available across most of Oklahoma. Not yet enrolled?

[Click Here to Sign Up!](#)

