

# Fall 2022 Covid-19 Plan

ECU has many duties, one of which is to provide employees with the safest work environment possible. Due to the ongoing pandemic, policies and procedures have been implemented to protect our campus community. These policies are subject to change. If they do so you will be notified via campus email. Employees are expected to comply with them as a directive from the leadership of this University.

## Face Coverings - Campus Friendly

East Central University does not require masks in campus buildings or on campus, however, the University is a “Mask Friendly” campus.

- Under Oklahoma Executive Order 2021-16, Oklahoma state agencies, which includes East Central University, are barred from requiring a mask or COVID-19 vaccination as a condition of being allowed to enter a state building or office.
- By the terms of this Executive Order, ECU is prohibited from requiring a vaccination against COVID-19 as a condition of admittance to any public building.
- Oklahoma Senate Bill 658, effective July 1, 2021: a university may not (in part): “Implement a mask mandate for students who have not been vaccinated against COVID-19.”
- The Centers for Disease Control has issued the following recommendations regarding masks or face-coverings:
  - For fully vaccinated people to wear a mask in public indoor settings in areas of substantial or high transmission. They also added that fully vaccinated people might choose to wear a mask regardless of the level of transmission, particularly if they are immunocompromised or at increased risk for severe disease from COVID-19, or if they have someone in their household who is immunocompromised, at increased risk of severe disease, or not fully vaccinated.
  - Recommends for fully vaccinated people who have a known exposure to someone with suspected or confirmed COVID-19, be tested 3-5 days after exposure, and to wear a mask in public indoor settings for 14 days, or until they receive a negative test result.
  - CDC recommends universal indoor masking for all teachers, staff, students, and visitors to schools, regardless of vaccination status.
  - Unvaccinated individuals are strongly encouraged to continue wearing masks inside ECU facilities. Any vaccinated person who wishes to mask indoors or outdoors may freely do so.



# Vaccinations

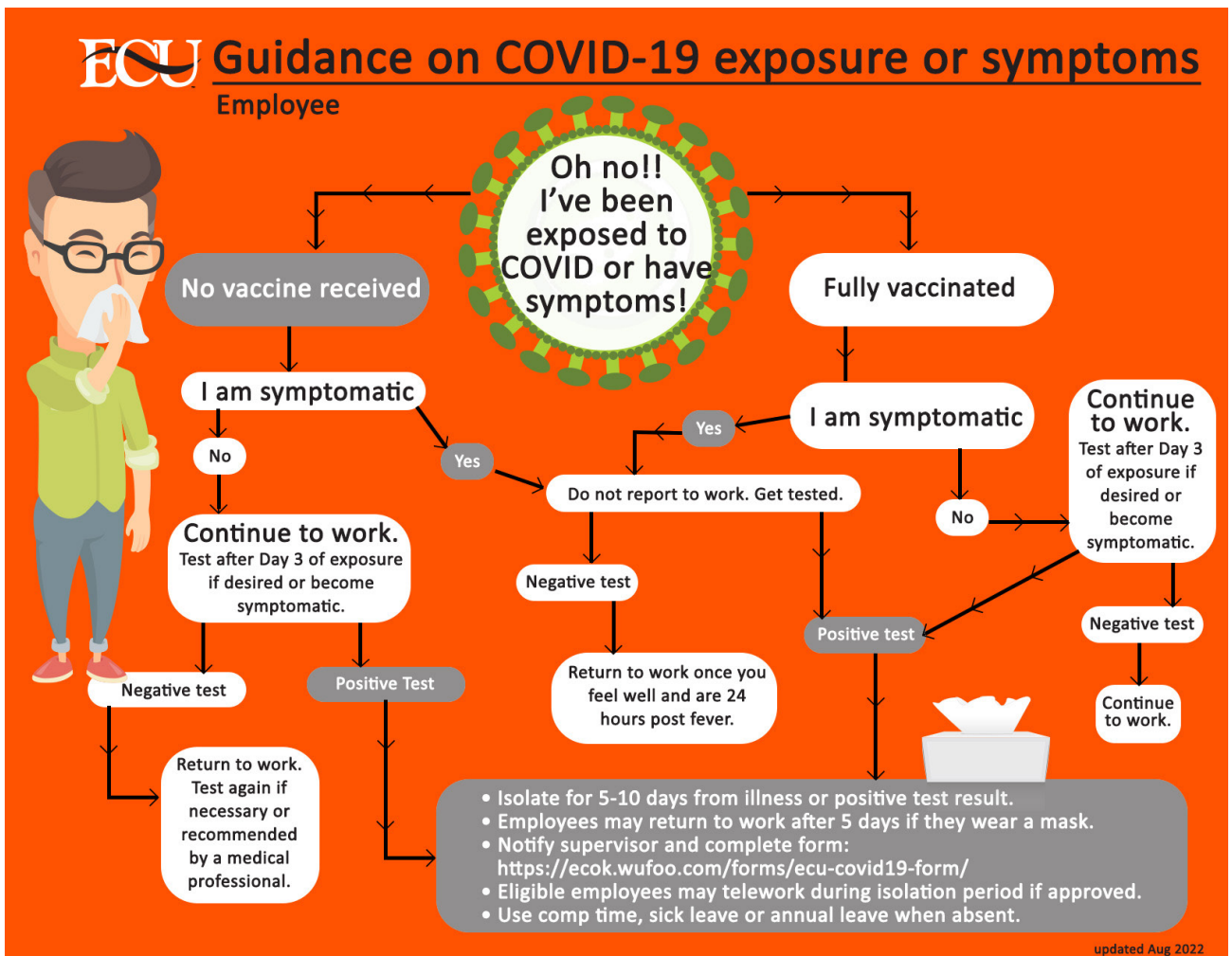
In accordance with Oklahoma state law, ECU does not require vaccination for COVID-19.

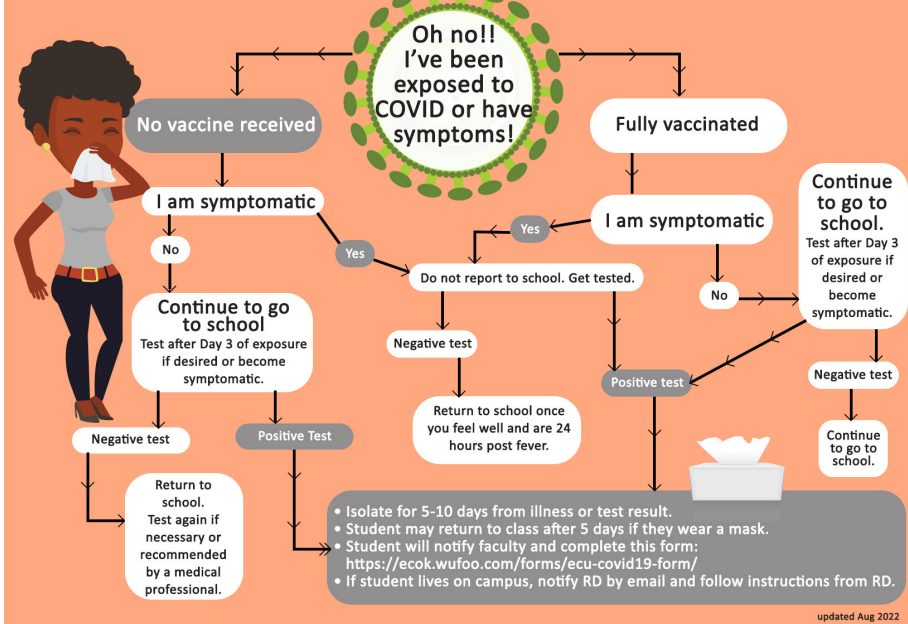
- Oklahoma Senate Bill 658, effective July 1, 2021, ECU may not:
  - Require a vaccination against Coronavirus disease 2019 (COVID-19) as a condition of admittance to or attendance of the school or institution;
  - Require a vaccine passport as a condition of admittance to or attendance of the school or institution; or
  - Implement a mask mandate for students who have not been vaccinated against COVID-19.

***Although not required ECU strongly encourages employees to get vaccinated.***

## Personal Daily Health Screenings

Please do not report to campus if you are ill. You are expected to self-monitor for covid symptoms and follow ECU protocol below if you test positive or have a direct exposure.





## Isolation and Testing

- Individuals who have active symptoms and/or have tested positive for COVID-19 will need to isolate.
- Individuals who have had direct contact with someone who has been diagnosed with COVID-19 may need to test.
- Contact ECU Health Services at 580-559-5713 if you have questions about COVID-19 or to report a positive test.
- For more CDC guidelines and information, visit [www.cdc.gov/coronavirus](http://www.cdc.gov/coronavirus).

## Plans for Remote/Online Delivery *if necessary*

**ECU students, faculty, and staff should be aware that if the University – for health and safety reasons – has to modify delivery method, there may be a need for on-site classes to be converted to an online/remote format. Whether this happens or not, please plan ahead. Students should plan to ensure they have access to computer equipment (either PC, MAC, or tablet), webcam, and internet connectivity to continue their classes in an online/remote format.**

- Students are asked to be aware of all official ECU student emails. The shift to on-site to online/remote classes might require a reorganization in the student's situation.
- If this transition occurs during the semester, students will be granted a 72-hour transition and grace period. Existing online classes will continue as scheduled without disruption. If this plan becomes necessary, the University will communicate additional details.
- Students who needed to stay/return to campus would be allowed to remain in the residence halls for the normal length of the semester for any remaining housing needs, including for those more voluntary activities like athletics, internships, and commencement ceremonies (assuming such activities are continuing). Residents will be required to abide by any additional safety measures that may need to be imposed.

## Cleaning/Sanitizing of University Facilities

- The ECU Physical Plant, following guidance from the CDC and Environmental Protective Agency (EPA), have added the following protocols to slow the spread of COVID-19:
  - Increased cleaning and disinfecting daily in campus buildings.
  - Installed hand sanitizing stations in key locations in all buildings.
  - Portable sprayers have been acquired to allow for the quick disinfecting of areas. Atomizing vapor disinfection equipment has been acquired and distributed for applying preventative disinfectant coverage to targeted areas.
  - Upgrades to air handling and filtration systems have been made to increase fresh air in the buildings, and where possible, filters have been increased from MERV 10 to MERV 1

## Enforcement of Guidelines

- The guidelines set forth in this plan and supporting documents are in addition to those policies, procedures, and practices set forth in the Student Code of Conduct, Personnel Handbook, and Faculty Handbook. This University has many responsibilities, one of which is to provide students, faculty, staff, and visitors with as safe an environment as possible. In doing so during this unprecedented and ever-changing time, certain policies and procedures have been implemented to protect our campus community which will be in effect until further notice. We all are expected to comply with them as directive from the leadership of this University.
- Employees and students who refuse to comply with the guidelines and policies included in this plan or update are subject to disciplinary action.
- If an employee is seeking an exemption from a policy due to medical reasons they should contact Assistant V.P. of Administration and Finance, Ty Anderson, at 580-559-5217.
- If a student is seeking an accommodation due to medical reasons, the individual should be referred to the Testing and Accessibility Office at 580-559-5297.

## Staying Informed

- Students, faculty, and staff should check their official ECU e-mail regularly for important messages and updates.
- Updated information about procedures, guidelines, and announcements are accessible at [www.ecok.edu](http://www.ecok.edu)